



Wheat Cowl



Materials

2 skeins of [Knitpicks capretta](#) (230yds, 50g) or your favorite fingering (size 1) yarn.

Needle Size

1(US) 2.5mm 16in circular

2(US) 3mm 16in circular

Gauge (tension)

32 stitches x 41 rounds in 10x10cm in stockinette

Finished Measurement Laid Flat

28x42cms

METHOD

This cowl is knit in the round. I used a tubular cast on and sewn bind off so the edges matched but you can use any cast on and bind off you prefer. It just needs to be stretchy so it goes over the head easily.



Wheat Cowl

Cowl Instructions

Cast on 168sts using smaller circular needles.

Join in the round.

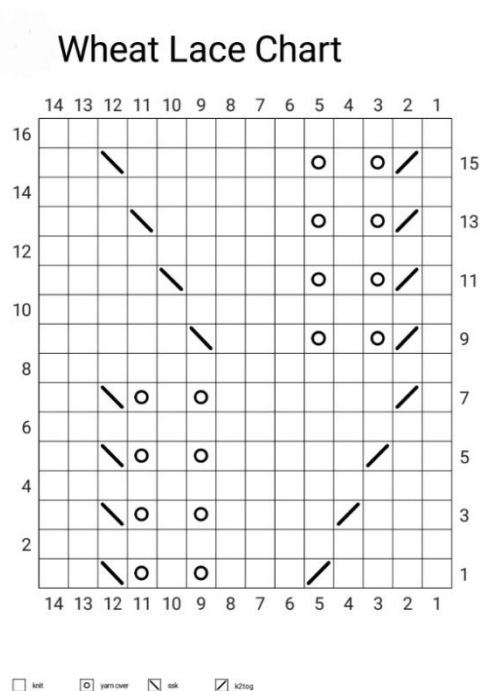
Place a marker to mark beginning of round.

I used a tubular cast on for the aesthetic, but you can use any cast on.

Work in k1p1 ribbing for 4cms.

Switching to larger sized circular needles, knit 1 round.

Work in lace chart until your work measures approximately 38cms from cast on edge, ending after completing a round 8 or 16 of the lace chart below.



WHEAT LACE PATTERN

Row 1 - k5, k2tog, k3, yo, k1, yo, ssk, k1

Row 2 - knit across

Row 3 - k4, k2tog, k4, yo, k1, yo, ssk, k1

Row 4 - knit across

Row 5 - k3, k2tog, k5, yo, k1, yo, ssk, k1

Row 6 - knit across

Row 7 - k2, k2tog, k6, yo, k1, yo, ssk, k1

Row 8 - knit across

Row 9 - k2, k2tog, yo, k1, yo, k3, ssk, k4

Row 10 - knit across

Row 11 - k2, k2tog, yo, k1, yo, k4, ssk, k3

Row 12 - knit across

Row 13 - k2, k2tog, yo, k1, yo, k5, ssk, k2

Row 14 - knit across

Row 15 - k2, k2tog, yo, k1, yo, k6, ssk, k1

Row 16 - knit across

Switch to smaller sized circular needles.

Work in k1p1 ribbing for 4cms. Your work should measure approximately 42cms from cast on edge but if it is a little bigger or smaller if you may needed to add or not work a few rounds to get to round 8 or 16 of the lace, that is okay. It does not need to be exact.

Bind off.

I used a sewn bind off to match my tubular cast on, but you can use any bind off.



Wheat Cowl



ABBREVIATIONS

K - knit

P - purl

YO - yarn over

K2TOG -knit 2 stitches

SSK - slip, slip, knit the slipped sts together