



Yarn - 1 skein [KnitPicks Capretta \(50g 230yd\)](#)

Gauge - 32x44sts per 4x4in or 10x10cm

Needles - 2 (3mm) circular and dpn

Sizes - newborn, (0-3m, 3-6m, 6-12m), toddler

Head Measurement - 12-14in/30-35cm, (13-15in/32.5-37.5cm, 14-16in/35/40cm, 15-17in/37.5-42.5), 16-18in/52.5-57.5cm

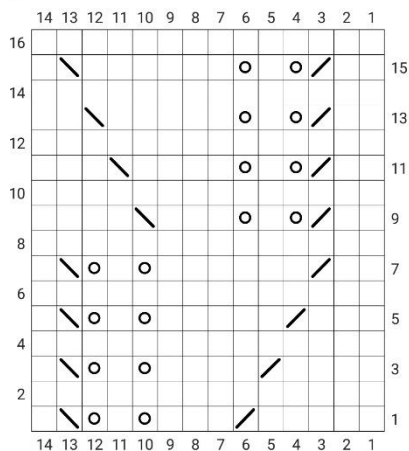
Other -yarn needle

Wheat Bonnet uses the same lace stitch as [Baby Wheat Cardigan](#), [Youth Wheat Cardigan](#), [Adult Wheat Cardigan](#), [Wheat socks](#), and [Wheat Cowl](#).

Abbreviations can be found on the last page.



Wheat Lace Chart



knit purl 2tog

WHEAT LACE PATTERN

- Row 1 - k5, k2tog, k3, yo, k1, yo, ssk, k1
- Row 2 - purl across
- Row 3 - k4, k2tog, k4, yo, k1, yo, ssk, k1
- Row 4 - purl across
- Row 5 - k3, k2tog, k5, yo, k1, yo, ssk, k1
- Row 6 - purl across
- Row 7 - k2, k2tog, k6, yo, k1, yo, ssk, k1
- Row 8 - purl across
- Row 9 - k1, k2tog, yo, k1, yo, k3, ssk, k4
- Row 10 - purl across
- Row 11 - k2, k2tog, yo, k1, yo, k4, ssk, k3
- Row 12 - purl across
- Row 13 - k2, k2tog, yo, k1, yo, k5, ssk, k2
- Row 14 - purl across
- Row 15 - k2, k2tog, yo, k1, yo, k6, ssk, k1
- Row 16 - purl across

NEWBORN

Cast on 80sts. I used the long tail cast on.

Work in a k1p1 ribbing (k1p1 across) for .5in/1.5cm. End after completing a wrong side row.

You will now start the body of the hat, working the wheat lace pattern as follow: k5, work lace pattern 5 times, k5

Repeat rows 1-16 of wheat lace pattern until your work measures appx 3.5in/14cm ending after completing a right side row (row 1 or 3). Transfer sts to dpn. Join in the round.

Knit 1 round.

DECREASES

- Round 1 - [k2tog, K8] Repeat [to] around (72sts)
- Round 2 - knit around
- Round 3 - [k2tog, K7] Repeat [to] around (64sts)
- Round 4 - knit around
- Round 5 - [k2tog, K6] Repeat [to] around (56sts)
- Round 6 - knit around
- Round 7 - [k2tog, K5] Repeat [to] around (48sts)
- Round 8 - knit around
- Round 9 - [k2tog, K4] Repeat [to] around (40sts)
- Round 10 - knit around
- Round 11 - [k2tog, K3] Repeat [to] around (32sts)
- Round 12 - knit around
- Round 13 - [k2tog, K2] Repeat [to] around (24sts)
- Round 14 - knit around



Round 15 - [k2tog, K1] Repeat [to] around (16sts)

Round 16 - [k2tog] Repeat [to] around (8sts)

Do not bind off. Cut a tail appx 6-8ins long. Using a yarn needle, pull through remaining stitches and cinch sts closed tightly. Weave in ends.

I-cord Ties: Cast on 3sts on double pointed needles and work appx 9-10ins for personal use and 12-14ins for photography use of i-cord (tutorial at the end of the pattern). Begin i-cord edging by using the length of i-cord you have already worked. Do so by knitting 2 icord sts, slip the last st, dip the needle into the edge of the back loop of the bonnet, and bringing the yarn around to knit, pick up a stitch in your salvage edge. Knit the last stitch of Icord together with the picked stitch of the bonnet. Once you have picked up and knit across salvage edge stitches, work an additional length of i-cord that matches the other tie. Weave in ends.

0-3 MONTH

Cast on 85sts. I used the long tail cast on.

Work in a k1p1 ribbing (k1p1 across) for .5in/1.5cm slipping the 1st st on each row for a 1 st salvage edge. End after completing a wrong side row.

You will now start the body of the hat, working the wheat lace pattern as follow: k1, work lace pattern 6 times

Repeat rows 1-16 of wheat lace pattern until your work measures appx 4in/11cm ending after completing a right side row (row 1 or 3). Transfer sts to dpn. Join in the round.

Knit 1 round.

DECREASES

Round 1 - [k2tog, K17] Repeat [to] around (80sts)

Round 2 - [k2tog, K8] Repeat [to] around (72ts)

Round 3- knit around

Round 4 - [k2tog, K7] Repeat [to] around (64sts)

Round 5 - knit around

Round 6 - [k2tog, K6] Repeat [to] around (56sts)

Round 7 - knit around

Round 8 - [k2tog, K5] Repeat [to] around (48sts)

Round 9 - knit around

Round 10 - [k2tog, K4] Repeat [to] around (40sts)

Round 11 - knit around

Round 12 - [k2tog, K3] Repeat [to] around (32sts)

Round 13 - knit around

Round 14 - [k2tog, K2] Repeat [to] around (24sts)

Round 15 - knit around

Round 16 - [k2tog, K1] Repeat [to] around (16sts)



Round 17 - [k2tog] Repeat [to] around (8sts)

Do not bind off. Cut a tail appx 6-8ins long. Using a yarn needle, pull through remaining stitches and cinch sts closed tightly. Weave in ends.

I-cord Ties: Cast on 3sts on double pointed needles and work appx 9-10ins for personal use and 12-14ins for photography use of i-cord (tutorial at the end of the pattern). Begin i-cord edging by using the length of i-cord you have already worked. Do so by knitting 2 icord sts, slip the last st, dip the needle into the edge of the back loop of the bonnet, and bringing the yarn around to knit, pick up a stitch in your salvage edge. Knit the last stitch of Icord together with the picked stitch of the bonnet. Once you have picked up and knit across salvage edge stitches, work an additional length of i-cord that matches the other tie. Weave in ends.

3-6 MONTH

Cast on 95sts. I used the long tail cast on.

Work in a k1p1 ribbing (k1p1 across) for .75in/2cm slipping the 1st st on each row for a 1 st salvage edge. End after completing a wrong side row.

You will now start the body of the hat, working the wheat lace pattern as follow: k5, work lace pattern 6 times, k6

Repeat rows 1-16 of wheat lace pattern until your work measures measures appx 4.5in/11cm ending after completing a right side row (row 1 or 3). Transfer sts to dpn. Join in the round. Knit 1 round.

DECREASES

Round 1 - [k2tog, K17] Repeat [to] around (90sts)

Round 2 - [k2tog, K8] Repeat [to] around (81ts)

Round 3- knit around

Round 4 - [k2tog, K7] Repeat [to] around (72sts)

Round 5 - knit around

Round 6 - [k2tog, K6] Repeat [to] around (63sts)

Round 7 - knit around

Round 8 - [k2tog, K5] Repeat [to] around (54sts)

Round 9 - knit around

Round 10 - [k2tog, K4] Repeat [to] around (45sts)

Round 11 - knit around

Round 12 - [k2tog, K3] Repeat [to] around (36sts)

Round 13 - knit around

Round 14 - [k2tog, K2] Repeat [to] around (27sts)

Round 15 - knit around

Round 16 - [k2tog, K1] Repeat [to] around (18sts)

Round 17 - knit around

Round 18 - [k2tog] Repeat [to] around (9sts)



Do not bind off. Cut a tail appx 6-8ins long. Using a yarn needle, pull through remaining stitches and cinch sts closed tightly. Weave in ends.

I-cord Ties: Cast on 3sts on double pointed needles and work appx 9-10ins for personal use and 12-14ins for photography use of i-cord (tutorial at the end of the pattern). Begin i-cord edging by using the length of i-cord you have already worked. Do so by knitting 2 icord sts, slip the last st, dip the needle into the edge of the back loop of the bonnet, and bringing the yarn around to knit, pick up a stitch in your salvage edge. Knit the last stitch of Icord together with the picked stitch of the bonnet. Once you have picked up and knit across salvage edge stitches, work an additional length of i-cord that matches the other tie. Weave in ends.

6-12 MONTH

Cast on 105sts. I used the long tail cast on.

Work in a k1p1 ribbing (k1p1 across) for .75in/2cm slipping the 1st st on each row for a 1 st salvage edge. End after completing a wrong side row.

You will now start the body of the hat, working the wheat lace pattern as follow: k3, work lace pattern 7 times, k4

Repeat rows 1-16 of wheat lace pattern until your work measures measures appx 5in/12.5cm ending after completing a right side row (row 1 or 3).

Transfer sts to dpn. Join in the round.

Knit 1 round.

DECREASES

Round 1 - [k2tog, K19] Repeat [to] around (100sts)

Round 2 - [k2tog, K8] Repeat [to] around (90sts)

Round 3- knit around

Round 4 - [k2tog, K7] Repeat [to] around (80sts)

Round 5 - knit around

Round 6 - [k2tog, K6] Repeat [to] around (70sts)

Round 7 - knit around

Round 8 - [k2tog, K5] Repeat [to] around (60sts)

Round 9 - knit around

Round 10 - [k2tog, K4] Repeat [to] around (50sts)

Round 11 - knit around

Round 12 - [k2tog, K3] Repeat [to] around (40sts)

Round 13 - knit around

Round 14 - [k2tog, K2] Repeat [to] around (30sts)

Round 15 - knit around

Round 16 - [k2tog, K1] Repeat [to] around (20sts) Round 17 - knit around Round 18 - [k2tog]

Repeat [to] around (10sts)



Do not bind off. Cut a tail appx 6-8ins long. Using a yarn needle, pull through remaining stitches and cinch sts closed tightly. Weave in ends.

I-cord Ties: Cast on 3sts on double pointed needles and work appx 9-10ins for personal use and 12-14ins for photography use of i-cord (tutorial at the end of the pattern). Begin i-cord edging by using the length of i-cord you have already worked. Do so by knitting 2 icord sts, slip the last st, dip the needle into the edge of the back loop of the bonnet, and bringing the yarn around to knit, pick up a stitch in your salvage edge. Knit the last stitch of Icord together with the picked stitch of the bonnet. Once you have picked up and knit across salvage edge stitches, work an additional length of i-cord that matches the other tie. Weave in ends.

TODDLER

Cast on 112sts. I used the long tail cast on.

Work in a k1p1 ribbing (k1p1 across) for .75in/2cm slipping the 1st st on each row for a 1 st salvage edge. End after completing a wrong side row.

You will now start the body of the hat, working the wheat lace pattern as follow: work lace pattern 8 times

Repeat rows 1-16 of wheat lace pattern until your work measures work measures appx 5.5in/14cm ending after completing a right side row (row 1 or 3).

Transfer sts to dpn. Join in the round.

Knit 1 round.

DECREASES

Round 1 - [k2tog, 54] Repeat [to] around (110sts)

Round 2 - [k2tog, K8] Repeat [to] around (99sts)

Round 3 - knit around

Round 4 - [k2tog, K7] Repeat [to] around (88sts)

Round 5 - knit around

Round 6 - [k2tog, K6] Repeat [to] around (77sts)

Round 7 - knit around

Round 8 - [k2tog, K5] Repeat [to] around (66sts)

Round 9 - knit around

Round 10 - [k2tog, K4] Repeat [to] around (55sts)

Round 11 - knit around

Round 12 - [k2tog, K3] Repeat [to] around (44sts)

Round 13 - knit around Round 13 - [k2tog, K2] Repeat [to] around (33sts)

Round 14 - knit around

Round 15 - [k2tog, K1] Repeat [to] around (22sts)

Round 16 - knit around

Round 17 - [k2tog] Repeat [to] around (11sts)



Do not bind off. Cut a tail appx 6-8ins long. Using a yarn needle, pull through remaining stitches and cinch sts closed tightly. Weave in ends.

I-cord Ties: Cast on 3sts on double pointed needles and work appx 9-10ins for personal use and 12-14ins for photography use of i-cord (tutorial at the end of the pattern). Begin i-cord edging by using the length of i-cord you have already worked. Do so by knitting 2 icord sts, slip the last st, dip the needle into the edge of the back loop of the bonnet, and bringing the yarn around to knit, pick up a stitch in your salvage edge. Knit the last stitch of Icord together with the picked stitch of the bonnet. Once you have picked up and knit across salvage edge stitches, work an additional length of i-cord that matches the other tie. Weave in ends.



ABBREVIATIONS

k - knit

P - purl

sl - slip stitch

yo - yarn over

k2tog -knit 2 stitches together

ssk - slip next st knitwise, slip next st knitwise, place stitches back onto left needle, knit both slipped sts together