



Solace Shawl



MATERIALS & INFO

Yarn – appx 810yds of worsted weight yarn
(I used Sirdar Jewelspun)

Gauge – 1 square appx 4.25x4.25ins or
11x11cms

Needles - 8 (5mm) straight

Notions - stitch marker, yarn needle

Appx size - 60x25ins or 150x62.5cms

PATTERN NOTES

Solace Shawl was created for prayer shawl ministry at my church. We give shawls to those who are sick, in the hospital, in nursing homes and pray over and with the person. It is a tangible reminder of the prayers being said.

Solace is a synonym for comfort. The perfect word to describe the purpose of a prayer shawl.

Abbreviations can be found on the last page.



Solace Shawl

PATTERN INSTRUCTIONS

First Square

Co 40 stitches

Row 1 (WS): k 20, pm, k 20 *

Row 2 (RS): k to 2 sts before marker, k2tog, sm, ssk, k to end of row

Row 3: k all sts

Repeat rows 2 and 3 until you have decreased down to two stitches. k2tog to finish the square.

Cut yarn leaving a 4-5in tail and pull through to secure.

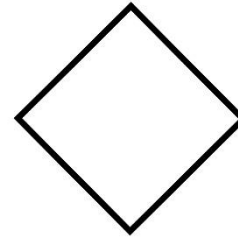


Fig. 1

Second Square

Pu 20 stitches from the left edge of the first square (the diagonal decrease should be pointing to the left) then cast on 20 more stitches using the knitted cast on. (see fig 2)

Repeat rows 1-3 as you did for the first square. This is the first square of row 2.

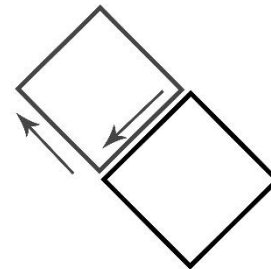


Fig. 2

Third Square

Co 20 stitches using the knitted method then pu 20 stitches from the top edge of the first square in your shawl. (Fig 3)

Repeat rows 1-3 as you did for the first square.

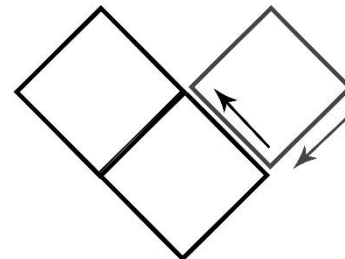


Fig. 3

When you want to begin your next square in your second row, you will pick up stitches from the left edge of the first square and the top edge of the square below. (fig 4)

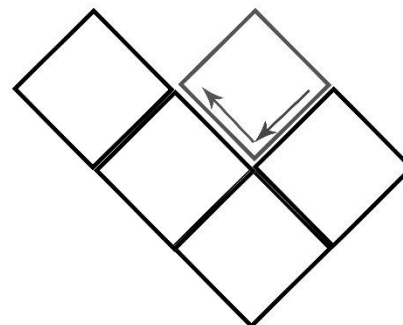


Fig. 4



Solace Shawl

Once you have completed 8 rows your works should look as fig 5.

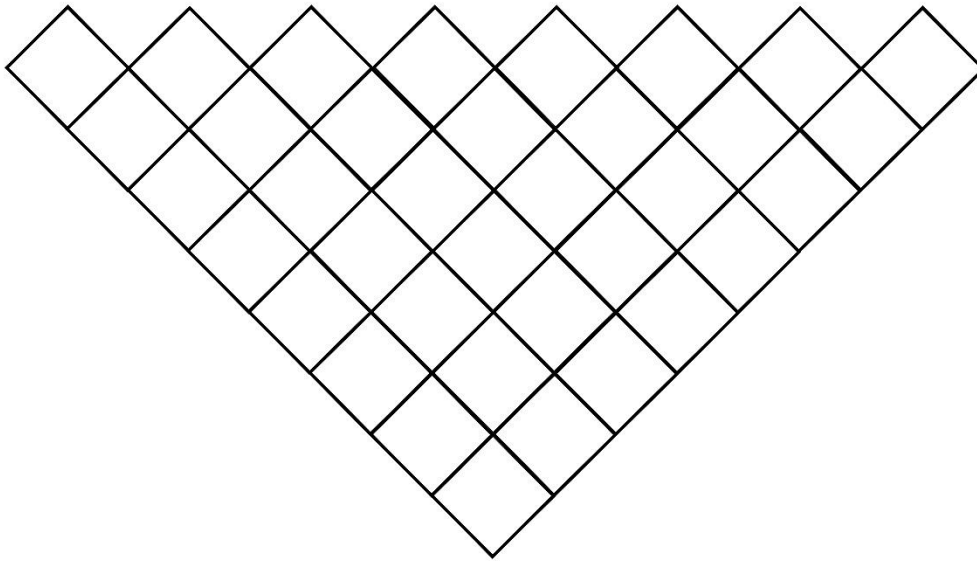


Fig. 5

First Triangle

Pu 20 stitches from the left edge of the first square (the diagonal decrease should be pointing to the left) then cast on 20 more stitches using the knitted cast on just as you did with the second square.

Row 1 (WS): k 20, pm, k 20 *

Row 2 (RS): k1, ssk, knit to 2 sts before marker, k2tog, sm, ssk, k to 3sts before end of row, k2tog, k1

Row 3: k all sts

Repeat rows 2 and 3 until you have decreased down to 8sts stitches ending on a row 3.

Last row: k1, k3tog, sm, sssk, k1 (4sts)

Cut yarn leaving a 4-5in tail and pull through 4 remaining stitches to secure. (see fig. 6)

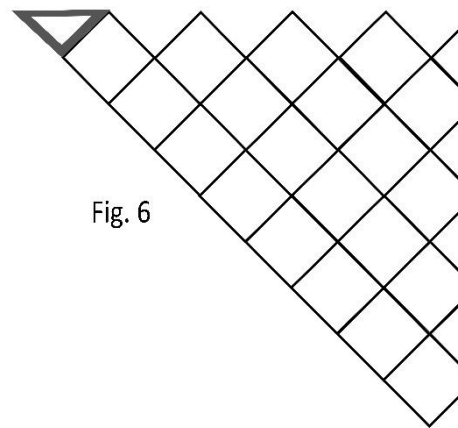


Fig. 6

When you want to begin your next triangle, you will pick up stitches from the left and right edges of the squares below.

Last Triangle

Co 20 stitches using the knitted method then pu 20 stitches from the top edge of the last square in your shawl.

Repeat rows 1-3 as you did for the first triangle.



Solace Shawl

Weave in all ends and block as desired. Your works should look as fig 7 once complete.

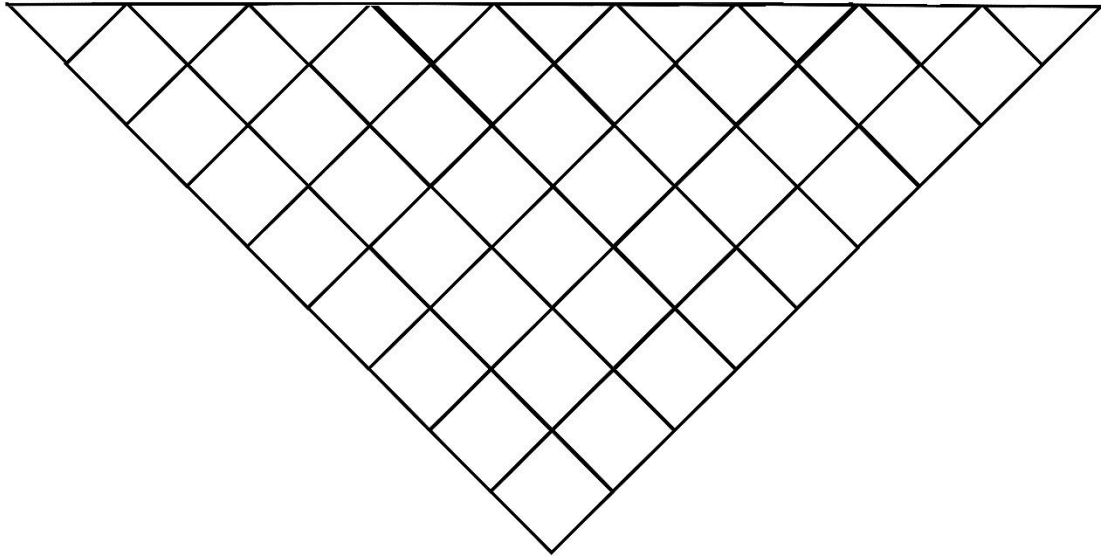


Fig. 7

ABBREVIATIONS

k - knit

p - purl

k2tog - knit two stitches together

k3tog - knit three stitches together

ssk - slip two stitches knitwise then knit those two stitches together

sssk - slip three stitches knitwise then knit those 3 stitches together

co - cast on

pu - pick up

pm - place marker

sm - slip marker