



Cable Crossbody Bag



MATERIALS AND INFO

Materials: 1 skein of [KnitPicks Cotlin](#), yarn needle, stitch markers, [crossbody bag strap](#), [12 in zipper](#), a fat quarter of a matching fabric, thread, needle (or you can use a sewing machine if you have one!)

Needle Size: 5(US) 3.75mm needles

Gauge (tension): 24sts to make 10cm across

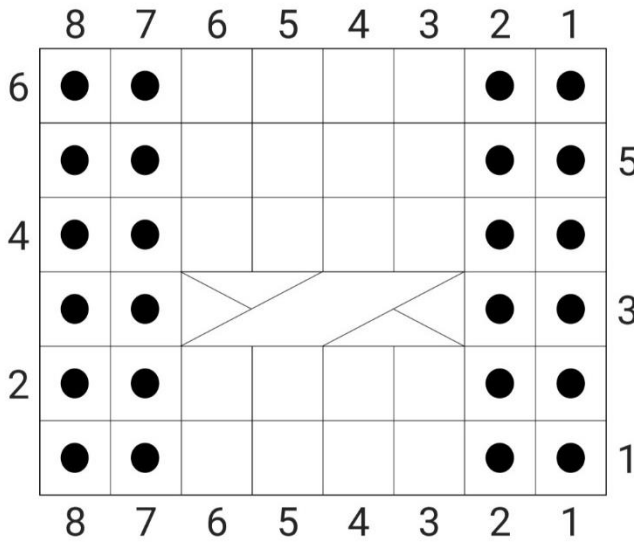
Finished Chest Measurement: 31cms across top x 11cms across bottom x 13cms tall

METHOD

This pattern is worked bottom up, working in the round. The bottom (cast on edge) is sewn shut after completed. I like to add a fabric lining to keep the bag from stretching but that is not required. [Here](#) is a link to a youtube video how I added my fabric lining.

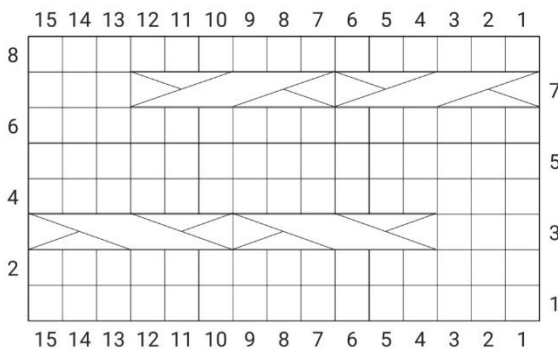


Cable Crossbody Bag



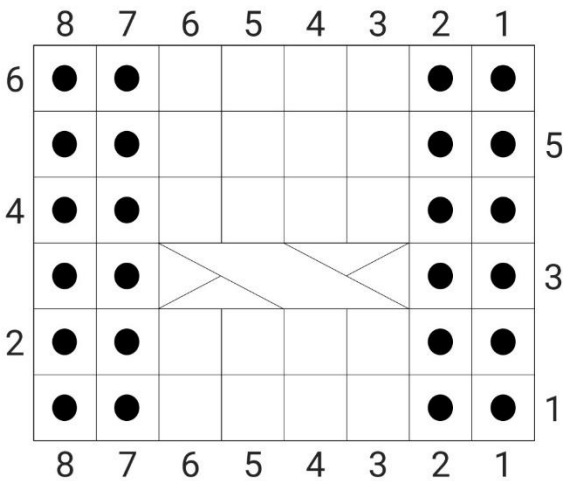
Cable A

- Row 1 - p2, k4, p2
- Row 2 - p2, k4, p2
- Row 3 - p2, c2b, p2
- Row 4 - p2, k4, p2
- Row 5 - p2, k4, p2
- Row 6 - p2, k4, p2



Cable B

- Row 1 - knit across
- Row 2 - knit across
- Row 3 - k3, c3f, c3f
- Row 4 - knit across
- Row 5 - knit across
- Row 6 - knit across
- Row 7 - c3b, c3b, k3
- Row 8 - knit across



Cable C

- Row 1 - p2, k4, p2
- Row 2 - p2, k4, p2
- Row 3 - p2, c2f, p2
- Row 4 - p2, k4, p2
- Row 5 - p2, k4, p2
- Row 6 - p2, k4, p2



Cable Crossbody Bag

MAIN BODY OF BAG

Cast on 70sts

Set-up round - k2, p2, k4, p2, k15, p2, k4, p2, k2, pm, k2, p2, k4, p2, k15, p2, k4, p2, k2

Round 1 - k1, m1l, k1, cable a chart, cable b chart, cable c chart, k1, m1r, k1, sm, k1, m1l, k1, cable a chart, cable b chart, cable c chart, k1, m1r, k1,

Round 2 - knit to cable a, work cable a, b and c, knit to marker, sm knit to cable a, work cable a, b and c, knit to bor marker

Continue working rounds 1 and 2 until you have worked a total of 22 increases.

HEM

Knit for 5 rounds

Fold over hem and sew it down.

I-CORD LOOP (make 2)

Work an i-cord for 6 rows leaving a long enough tail on the cast on and bind off.

Sew the loop to the inside where the increase sections created corners at the top.

This will make a loop to attach your bag strap.

FINISHING

Sew bottom cast on edge closed.

OPTIONAL LINING

Fold the fat quarter in half, place your bag down and draw about a half centimeter bigger than the bag (this gives you a seam allowance). Cut the fabric out. With right sides together sew the side and bottom edges of the fabric. (it doesn't need to be perfect since it will be inside the bag.) You can use a sewing machine here if you have one. Leave the top open.

Place your cloth bag inside your knit bag. I highly suggest tacking the cloth bag down in a few spots along the increase edge and the bottom seam.

When adding your zipper place it between the knit bag and cloth bag, pin it, and sew well. Again, a sewing machine can be used here. You can hide your zipper seam in the hem seam.

Weave in all ends. Load with all of your necessities and enjoy!



Cable Crossbody Bag

ABBREVIATIONS

k - knit

P - purl

pm - place marker

sm - slip marker

bor - beginning of round

m1l - make 1 left

m1r - make 1 right

yo - yarn over

st - stitch

c2b - place 2 sts on cable needle, hold in back, knit 2 sts from working needle, knit 2 sts from cable needle.

C2f - place 2 sts on cable needle, hold in front, knit 2 sts from working needle, knit 2 sts from cable needle.

C3b - place 3 sts on cable needle, hold in back, knit 3 sts from working needle, knit 3 sts from cable needle.

C3f - place 3 sts on cable needle, hold in front, knit 3 sts from working needle, knit 3 sts from cable needle.