



Materials:

Yarn: (1, 1) 1, 1 (1, 2) skeins of [Hobbii Unicorn Solids \(Affiliate Link\)](#) 437yd/100g

Needles: US #1 / 2.25mm DPNs (or circular for magic loop)

Notions: stitch markers, needle

Gauge: 32sts x 44rows per 4x4ins or 10x10cms

sizing:

(toddler, child,) lg child, adult S, (M, L)

Finished measurements (unstretched):

Foot Length (adjustable): (6, 7.25), 8, 9, (10, 11.25) ins or (15, 18.5) 20, 23 (25.5, 28.5) cms

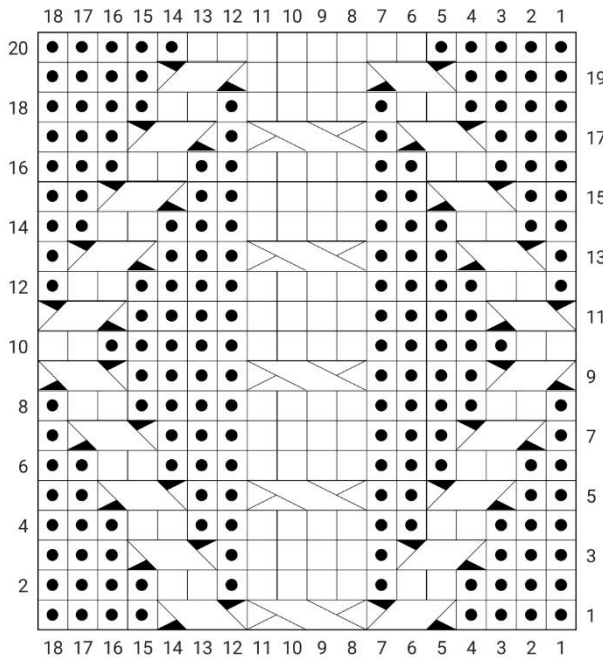
The model size is a large child for a show size of boys US size 13.

Abbreviations can be found on the last page.



PETER CENTER CABLE STITCH PATTERN:

Peter Center Cable



- Row 1 (right side) - p4, 2/1RPC, 2/2LC, 2/1LPC, p4
- Row 2 - p4, k2, p1, k4, p1, k2, p4
- Row 3 - p3, 2/1RPC, p1, k4, p1, 2/1LPC, p3
- Row 4 - p3, k2, p2, k4, p2, k2, p3
- Row 5 - p2, 2/1RPC, p2, 2/2LC, p2, 2/1LPC, p2
- Row 6 - p2, k2, p3, k4, p3, k2, p2
- Row 7 - p1, 2/1RPC, p3, k4, p3, 2/1LPC, p1
- Row 8 - p1, k2, p4, k4, p4, k2, p1
- Row 9 - 2/1RPC, p4, 2/2LC, p4, 2/1LPC
- Row 10 - k2, p5, k4, p5, k2
- Row 11 - 2/1LPC, p4, k4, p4, 2/1RPC
- Row 12 - p1, k2, p4, k4, p4, k2, p1
- Row 13 - p1, 2/1LPC, p3, 2/2LC, p3, 2/1RPC, p1
- Row 14 - p2, k2, p3, k4, p3, k2, p2
- Row 15 - p2, 2/1LPC, p2, k4, p2, 2/1RPC, p2
- Row 16 - p3, k2, p2, k4, p2, k2, p3
- Row 17 - p3, 2/1LPC, p1, 2/2LC, p1, 2/1RPC, p3
- Row 18 - p4, k2, p1, k4, p1, k2, p4
- Row 19 - p4, 2/1LPC, k4, 2/1RPC, p4
- Row 20 - p5, k8, p5

Cuff

Cast on (48, 52) 56, 60, (64, 72) sts, join for working in the round.

Separate stitches on your dpn as follows:

1st needle (24, 26) 28, 30 (32, 36) sts each needle

2nd needle (12, 13) 14, 15 (16, 18) sts each needle

3rd needle (12, 13) 14, 15 (16, 18) sts each needle

Work in 1x1 rib (k1p1 around) for (8, 10) 10, 12 (12, 14) rounds

Leg

Set-up round - k[(1, 2) 3, 4 (5, 7)], m1, p1, k2, pm, m1, p4, k8, p4, m1, pm, k2, p1, m1, k around. (52, 56), 60, 64 (68, 76) sts

Work Peter Stitch pattern as follows:



K[(1, 2) 3, 4 (5, 7)], p2, k2, sm, work Peter Stitch Pattern to marker, sm, k2, p2, knit around until piece measures (3.5, 4) 4.5, 5, (6, 7)ins or (9, 10) 11.5, 12.5 (15.5, 18) cms from cast on (or desired length)

Heel Flap

Next round: work needle 1 in pattern. These worked stitches will now be placed on hold (you will NOT be using them for the heel).

The remaining (24, 26) 28, 30 (32, 36) sts will be your heel worked as below:

Row 1 (RS): (sl1, k1) to end, turn work.

Row 2 (WS): sl1, purl to end, turn work.

Work rows 1-2 a total of (11, 12) 13, 14, (15, 17) times.

This is a total of (22, 24), 26, 28, (30, 34) rows.

Heel Turn

Row 1 (RS): sl1, k(14, 14), 16, 16, (18, 20), ssk, k1, turn work

Row 2 (WS): sl1, p(7, 5) 7, 5, (7, 7), p2tog, p1, turn work

Row 3: sl1, knit to 1 st before the gap, ssk, k1, turn work

Row 4: sl1, purl to 1 st before the gap, p2tog, p1, turn work

Repeat rows 3-4 until all stitches have been worked: (16, 16), 18, 18, (20, 22) sts remain on heel.

Knit across these heel stitches slipping the first st.

Gusset

Pick up and knit (11, 13), 14, 15, (16, 18) sts along the edge of heel flap, PM, work (28, 30), 32, 34, (36, 40) in pattern, PM, pick up and knit (11, 13), 14, 15, (16, 18)sts along heel flap, k(8, 8) 9, 9, (10, 11) sts, mark the new BOR (located at the bottom of the foot). [(66, 72) 78, 82, (88, 98) sts]

Round 1: knit to marker, work to marker in pattern, knit to bor marker

Round 2: knit to 3 sts before marker, k2tog, k1, sm, work (28, 30), 32, 34, (36, 40) in pattern, sm, k1, ssk, knit to end [2 sts dec]

Work rounds 1-2 a total of (8, 8) 9, 9, (10, 11) times. [(52, 56), 60, 64 (68, 76) sts]

Foot

Shift beginning of round (BOR) remove marker as follows: remove marker, k(12, 13) 14, 15 (16, 18), place marker - this is the new BOR, located at the side of the foot.

Keep the second marker after the instep stitches in place.

Continue working in the round, keeping the top of foot in pattern, until the piece measures (5, 6) 6.5, 7, (8, 9)ins or (12.5, 15) 16.5, 18 (20.5, 23)cms from back of heel, or (1, 1.5) 1.75, 2, (2, 2.25)ins or (2.5, 3.5) 4.5, 5 (5, 5.5) cms short of desired foot length.



Toe

Set-up Round - k[(0, 1) 2, 3 (4, 6)], ssk, k2tog, k1, remove marker, knit across in pattern, remove marker, k1, ssk, p2tog, k[(0, 1) 2, 3 (4, 6)], place marker, knit around. (48, 52) 56, 60, (64, 72) sts

You will now work in stockinette for the remainder of the sock.

Round 1: k1, ssk, knit to 3 sts before marker, k2tog, k2, ssk, knit to 3 sts before end of round, k2tog, k1 [4 sts dec]

Round 2: knit around

Work rounds 1-2 a total of (8, 8) 9, 10, (10, 12) times. until (16, 20) 20, 20, (24, 24) sts remain.

Cut yarn leaving a tail long enough to sew the toe closed, then graft toe using Kitchener stitch.

Weave in all ends

Kitchener stitch:

Place half the stitches on one needle, half the stitches on the other needle, (top and bottom NOT side to side)

Cut yarn (leaving a long yarn tail) and thread through a blunt needle.

Set-up steps: Insert needle purlwise (back to front) through the first st on front needle, leaving the st on the needle. Then insert needle knitwise (front to back) through the first st on the back needle, leaving the st on the needle.

Step 1: Insert needle knitwise through first st on front needle, then slip this st off the needle.

Step 2: Insert needle purlwise through the second st on front needle, leaving the st on the needle.

Step 3: Insert needle purlwise through first st on back needle, then drop this stitch off the needle.

Step 4: Insert needle knitwise through second st on back needle, leaving the st on the needle.

From this point to the end, repeat steps 1-4.

Kitchener stitch can be intimidating, but you get into a rhythm:

Front needle: knitwise drop off, purlwise leave on,

Back needle: purlwise drop off, knitwise leave on,

Repeat!

At the end of the row, there is only 1 stitch left on each needle.

Work steps 1 and 3 once more.

For a left-handed video tutorial of this visit my youtube [here](#)



Abbreviations

k - knit

P - purl

sm - slip maker

pm - place marker

bor - beginning of round

st - stich

sts - stitches

k2tog -knit 2 stitches together

ssk - slip next st knitwise, slip next st knitwise, place stitches back onto left needle, knit both slipped sts together

m1 - make one

w&t - wrap and turn - wrap the yarn around the next stitch, turn work

2/1LPC - slip the next 2sts onto cable needle and hold at front of work, p1 from left needle, then k2 from cable needle

2/1RPC - slip, the next st onto cable needle and hold at back of work, k2 from left needle, them p1 from cable needle

2/2LC - slip the next 2 sts onto cable needle and hold at front of work, k2 from left needle, k2 from cable needle